



Giggleswick Primary School



September

A member of The Ribblesdale Federation of Schools – *fostering a love of learning through collaboration and fun*

Welcome to our September Newsletter. We hope you had a lovely summer break and that everyone has had time to relax and recharge their batteries. We are very much looking forward to the new year and have lots planned across our Federation. We would like to say a big warm welcome to our new starters in Tams and Alkelda Classes.



We will cherish the moments we have with our current Year 6 pupils and prepare them as much as we can for their transition to Year 7 in 2022!



Dates for Diaries 2021 (Please note diary dates may change due to Covid-19 and dates will also be added throughout the academic

Tuesday 28th September	Harvest Festival
Tuesday 12th October	Parents can now apply for Reception place 2022
Thursday 21st October	New Bushcrafting Day for Alkelda Class
Friday 22nd October	School closes at 3.30pm/5.00pm for half term
Sunday 31st October	Current Year 6 Deadline for Year 7 Application Forms <small>(Please also see email) https://www.northyorks.gov.uk/apply-place-primary-or-secondary-school</small>
Monday 1st November	Start of new half term for pupils
Tuesday 23rd November	Flu Nasal Vaccine NHS Team attending school. Consent to be given online .
Wednesday 15th December	Christmas Lunch
Friday 17th December	School closes at 3.30pm for Christmas Holidays

Outdoor learning

We have exciting news to share with you. During our Inset Day, staff had training on how we can run Forest School sessions.

A Forest School is a long-term outdoor education process that is holistic and learner-led. It allows children to develop themselves through healthy engagement with risk, problem-solving and self-discovery, all within a natural environment in a hands-on and thoughtful manner.

All forms of outdoor education are valuable, but Forest Schools has its own philosophies and ethos that benefit children in unique ways. Forest Schools are delivered through several regular sessions over an extended period of time – ideally weekly over at least a year, to incorporate different seasons. This training will enhance the curriculum which we currently provide across The Ribblesdale Federation of Schools.

We also have some exciting plans regarding our outside space, which is going to be amazing! Using our school's Sports Funding, a new playground structure, with a range of climbing and physical challenges, is being erected this half term in the side yard area.



July Whole School Attendance 95.45 %



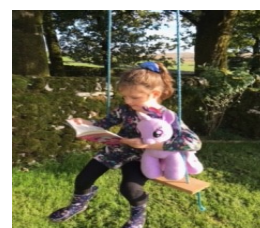
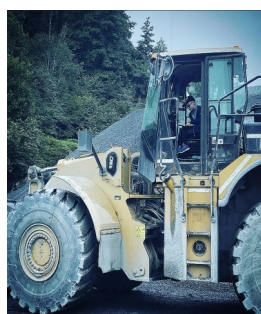
Friends: We will be letting you know a date for the proposed first meeting of the new year.

Parking outside school: We ask parents/carers to not park right outside school to either drop off or pick up. Please use Raines Road for parking safely.

Celebration Assemblies: Celebration Assemblies will take place each Friday led by Miss Ward. As soon as we are able to, you will be invited to join us to celebrate your children's achievements; as you will appreciate we need to follow the relevant Covid risk assessments.

Swimming: Swimming blocks (per class) will start in September for Years 5 & 6 and will gradually filter through to each class to our youngest pupils in the summer term.

Extreme Reading Alkelda Class: We have some amazing photos of our pupils in reading in extreme places. Here are just a few!



North Craven Cross Country: 21 of our pupils took part in the recent North Craven Cross Country at Giggleswick School and 8 finished in the first eight places in their age group and have qualified for the Craven Cross Country final on Tuesday 9th November 2021. Well done to all who took part.



Settle Pop Up Pantry: Every Friday 11.00am —12.00 midday Holy Ascension Church, Settle “bring what you can—take what you need.” They have a range of essential food and other items for everyone. No registration necessary.



To follow 'The Ribblesdale Federation of Schools' via Twitter - please go to [@FedRibblesdale](https://twitter.com/FedRibblesdale)

This is a protected account and only confirmed followers will have access to the Tweets and our complete profile.

Please help our followers to grow!

Thank you for your continuing support.

