

A member of The Ribblesdale Federation of Schools – *fostering a love of learning through collaboration and fun*

Welcome to our September Newsletter. We hope you have all had a lovely summer break and that everyone has had time to relax and recharge their batteries. We are very much looking forward to another super academic year and have lots planned across our Federation. We would like to say a big warm welcome to our new starters in Robin Class, who are all looking very smart in their school uniform and are bursting with enthusiasm! We also have Miss Tulley joining our team and I am sure you will join us in giving her a very warm welcome when you see her on the school playground at the end of the day. Miss Tulley will be with us on Tuesday mornings, all day Wednesday, Thursday and Friday working in partnership with Miss Binns in Robin Class. As some of you will already know, Mrs Whitehead will be teaching Years 2, 3 & 4 in Starling Class and Ms Ward will be teaching Years 5 and 6 in Owl Class. We will all cherish the moments we have with our current Year 6 pupils and prepare them as much as we can for their transition to Year 7 in 2022!



Dates for Diaries 2021

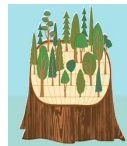
(Please note diary dates may change due to Covid-19 and dates will also be added throughout the academic year)

Monday 6th	Staff Inset Day
September	
Tuesday 7th	Start of term for pupils
September	
Tuesday 14th	Swimming at Settle
September (Last session Tuesday 19th October)	Swimming Pool Year 5 & 6 (5 sessions)
Tuesday 21st	Puppet Extravaganza
September	Robin Class attending Giggleswick Primary School (See letter sent via email for details)
Friday 22nd	School closes at (3.30pm) for half term
October	
	Autumn half term
Monday 1st	Start of term for pupils
November	
Tuesday 9th	Swimming at Settle
November (Last session Tuesday 7th December 21)	Swimming Pool Year 5 & 6 (6 sessions)
Monday 29th	Flu Nasal Vaccine
November	NHS Team attending school. Consent to be given online (More information to follow)
Friday 17th	School closes at 3.30pm for half term
December	
	Christmas half term holiday

Outdoor learning

We also have some exciting news to share with you. During our Inset Day, staff had training on how we can run Forest School sessions. A Forest School is a long-term outdoor education process that is holistic and learner-led. It allows children to develop themselves through healthy engagement with risk, problem-solving and self-discovery, all within a natural environment in a hands-on and thoughtful manner. All forms of outdoor education are valuable, but Forest Schools have their own philosophies and ethos that benefit children in unique ways. Forest Schools are delivered through several regular sessions over an extended period of time – ideally weekly over at least a year, to incorporate different seasons. This training will enhance the curriculum which we currently provide across The Ribblesdale Federation of Schools.

We also have some exciting plans regarding our outside space, which is going to be amazing! Using our school's Sports Fund, we can confirm that a state of the art playground structure, with a range of climbing and physical challenges, will be erected in September. This will add significantly to the children's options for physical development each playtime.



Staffing 21/22 The Ribblesdale Federation of Schools (Team Long Preston)

Executive Headteacher/Designated Safeguarding Lead: Miss Ward

SENDCo: Mrs Devereux **Deputy Safeguarding Leads:** Ms Ward

Robin Class - Teachers: Miss Binns & Miss Tulley (Supported by Mrs. Stirton)

Starling Class - Teachers: Mrs Whitehead (Supported by Mrs Coultherd, Mrs Leahy and Mrs Hopkins)

Owl Class - Teacher: Ms Ward (Supported by Mrs Greaves)

Midday Supervisors (MSA): Mrs Stirton, Mrs Coultherd, Mrs Hopkins & Mrs Leahy

School Cook: Mrs. Barrett

School Administrators: Mrs Middleton & Mrs Croft

July Whole School

Attendance 96.8%



House Keeping: Day to Day: Start of day: 8.45am, Registration 9.00am, Lunch - 12.00 to 1.00pm (Including Playtime), Home-time: 3.30pm. **PE days** - Pupils to attend wearing PE kits (Tuesday & Thursday).

After School Clubs: information to follow.

Admin Packs: Please be aware an admin pack will be coming to each family, in the near future. This will include: Personal detail updates/Home school agreements/Consents for local trips/visits, photos, social media etc. We appreciate it is a lot of paperwork and some documents are double sided. If you need help completing forms, please just ask. It is important information that we need as a school to operate and keep your child safe - so please complete each document and return as soon as you can.

Friends of Long Preston School: For our new families who have recently become part of our school, we are very proud of our Friends (FOLPS) (PTA). They are active in supporting the school both financially and socially through fund raising and events throughout the year, enabling us to enhance the education of our pupils through visits, resources and treats that wouldn't be possible (even through the challenges of a Pandemic!). If you are interested in becoming involved, please don't hesitate to let us know and we can pass on your details and they can let you know when the next AGM is.

Swimming: Swimming blocks (per class) will start in September for Years 5 & 6 and will gradually filter through to each class to our youngest pupils in the summer term (Please refer to diary dates for our swimming blocks which is also listed below). Pupils are to attend school with their kits on under their P.E kits with a towel and underwear to change into (as swimming falls on a PE day). Transport will be provided via Bibby's of Ingleton and we will be departing from school as soon as pupils have been registered with their Class Teacher.

Swimming - Provisional Dates: **Year 5 & 6:** 14.09.21 - 19.10.21 (6 sessions) 09.11.21 - 07.12.21 (5 sessions). **Year 2, 3 & 4:** 11.01.22 - 15.02.22 (6 sessions) 08.03.22 - 05.04.22 (5 sessions). **Reception & Year 1** 03.05.22 - 24.05.22 (4 sessions) 14.06.22 - 05.07.22 (4 sessions). We will update you if anything changes regarding these dates.

School Money: We have now been using School Money for over a year, therefore we are no longer able to accept payments via cash or cheque. We hope that any outstanding payments due were cleared during the summer holiday period. If you have anything still outstanding, we kindly ask if this can be paid in full as soon as possible (as a matter of urgency as all pupil should now have a £0 balance on their individual account –thank you). Please contact the school office if you require assistance with School Money. **For our new families, you will be sent a link via a text/email shortly to access School Money.**

School Lunches/Milk: Lunches School lunches are £2.50 a day, £12.50 a week payable in advance via SchoolMoney. Our lunches are very popular and we use ingredients which are locally sourced. Everything is cooked from scratch freshly on site each day. Please can we remind you that if your child has school dinners and you wish them to have a packed lunch, or vice versa, we do require at least 2 week's notice. Please see the school website for our current Winter Menu which will continue until February half term, when we will start our Spring Menu. Milk is available at morning break time at a cost of 18p a day for children in Years 1 to 6. This is payable in advance via School Money Reception children are entitled to free milk due to a Government initiative.



To follow 'The Ribblesdale Federation of Schools' via Twitter - please go to '@FedRibblesdale'

This is a protected account and only confirmed followers will have access to the Tweets and our complete profile.

Please help our followers to grow!

**Thank you for your continuing support from all the team at Long Preston School
(Part of The Ribblesdale Federation of Schools)**

