



Hellifield Community Primary School Newsletter



December

A member of The Ribblesdale Federation of Schools – fostering a love of learning through collaboration and fun

Welcome to our **December Newsletter**. As another year comes to a close, we have lots of things to be thankful for, especially our health as we continue this journey together through a global pandemic. Our wonderful reception pupils have almost made it through their first term and all the pupils across the Federation continue to make us smile every day, always full of enthusiasm and curiosity - with a positive attitude towards their own learning. Thank you to The Federation Team and to our Governors for everything that they have done for us throughout 2021. We still have lots to look forward to leading up to Christmas, including our Nativity. We are very much looking forward to Christmas Dinner this year which every pupil will be having. A big thank you to Mrs Eggleston who always does a wonderful job, Acorns made a wish whilst stirring the Christmas Pudding! Our Christmas Tree is looking beautiful, thank you to those who have brought beautiful baubles for our theme **Magic and Sparkle**; the spirit of Christmas is now all around us! We finish on Friday the 17th of December and look forward to the new year with our pupils starting on Wednesday 5th of January 2021. Thank you for your continued support throughout 2021, we wish you all a very happy and healthy 2022 from all of us at The Ribblesdale Federation of Schools!



Dates for Diaries 2021/221

(Please note diary dates may change due to Covid-19 and dates will also be added throughout the academic year)

Wednesday 8th December	Hellifield C.P School: Nativity
Thursday 9th November	Christmas Dinner for pupils & Christmas Jumper Day
Friday 17th December	School closes at (3.30pm) for Christmas
Tuesday 4th January 2022	Teacher INSET Day
Wednesday 5th January 2022	Children return to school (Start of term for pupils)

Friends of Hellifield - Events

We would also like to thank 'Friends of Hellifield' who have continued to raise funds for our lovely school throughout 2021 and we are very grateful for this. Thank you to all the pupils who took part in the Sponsored Walk last month, this was a fantastic day and everyone enjoyed this experience; wow, you are superstars! Our pupils enjoyed their hot chocolate treat which warmed everyone up upon our return. Please can sponsor money donations be sent in as soon as possible, as we would like to update you on our grant total. We also have our scheduled Bag-2-School collection this month (**Collection date: 2nd December**). Thank you to everyone who helped to organise these wonderful fundraising events this year!



All Aboard the Bentham Line!

A big thank you to the team of the Bentham line who organised a wonderful day with Miss Sargison and Mrs Cawood. Our key stage two pupils departed from Hellifield Station and headed to Carnforth, spending a wonderful day at The Heritage Centre. We took part in a special Art Project as well as gaining lots of knowledge about trains from this exciting experience. We enjoyed traveling on the train and enjoyed the beautiful views whilst travelling from our village and during the return journey to Hellifield Railway Station. Everyone had a wonderful time.



...On the 11th hour, of the 11th day, of the 11 month, we remembered...

It was lovely to see some of our pupils attending our special Remembrance Assembly last month in their Rainbow, Cubs, Brownie and Scout uniforms. On the 11th hour we paid our respects and remembered those who have served our Queen and country and to those whose lives have been lost through War. Thank you to all the pupils who contributed to our Poppy Appeal this year so generously.



November Whole School Attendance: 98.7%

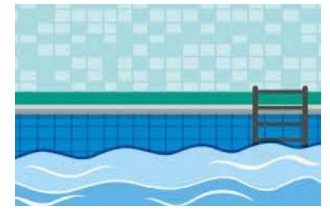


Swimming

(Years 5 & 6 09.11.21 - 07.12.21 5 sessions / Next term:11.01.22 - 15.02.22 6 sessions)

Oak Class have thoroughly enjoyed being back at swimming. We will continue after the Christmas Holiday period. Please can pupils be pool ready on the day of swimming and have swimming costumes on (with underwear to change into after the session), including a towel and goggles -

Thank you.



Our Wonderful Outdoor Space

Our pupils are thoroughly enjoying our new outdoor equipment. Please can we all work together to make sure this space is looked after as it can only be accessed by our pupils during school hours. If you notice anyone on our school grounds (out of hours) please can you let us know as this is classed as a trespassing - thank you.



Open Day

A big thank you to those who attended our Federation Open Day for families of pupils who are starting in September 2022. It was lovely to meet you all and celebrate our wonderful school with those who attended.



Absences & Safeguarding (Illness)

If your child is absent from school, please contact us as soon as possible giving a reason why. If your child is showing symptoms connected to Covid-19, please do a Covid-19 L F test as a precaution to keep everyone as safe as possible as there are still a high number of Covid-19 cases within our local community. Please also refer to our October Newsletter with reference to attendance guidance. If your child has sickness or a poorly tummy, they need to stay at home and be clear from the last tummy upset for 48 hours. Please note we are monitoring individual attendance. We ask that all family holidays are planned during the scheduled holiday period, as other absences have to be recorded as unauthorised (following the DFE code of conduct). Ten unauthorised absences can trigger a fine of £60 (per child). Please note that absences are recorded as AM and PM sessions (two sessions per day); a full week away from school is ten valuable educational sessions missed. We have a legal obligation to report a high number of unauthorised absences to the LEA.



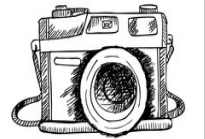
Toy Donations



Thank you to those who have asked about toy donations, we do accept toys in good condition for our younger pupils. Please can you let us know what you would like to donate in advance as we have limited storage space. Thank you

School Photographs

Thank you to those who supported our School Photo venture this year. Julia thoroughly enjoyed spending time with our team and pupils. We hope you like the photos! <https://www.juliakennedy.com>



Children in Need & Odd Socks Day

Thank you to all the pupils who supported Children in Need this year! Our theme was: Come As Yourself! Our pupils had a fun-filled afternoon completing a variety of educational tasks linking to Pudsey Bear. Our School Council are planning on counting what was raised at their next meeting, we will update you as soon as we know more! It was lovely to see staff and pupils supporting our Odd Socks Day last month to start our anti-bullying week across our Federation. This showed how we are all different and unique!



Weather

Due to the cold weather approaching, please make sure that pupils come to school with a waterproof coat and warm accessories. It is extremely rare for us to close because of the weather and this will be only be in the interests of health and safety for staff and pupils. If we need to do so, you will be informed via a text message and if possible, this will be announced on our school website. We aim to let parents and carers know as early as we can. If weather conditions deteriorate during the school day and there is a need for early closure, we will again send parents a text message and notification will be on the website if possible. Please can you ensure that we have up to date contact numbers for you - Thank you.



We need you!

We are in need of volunteers to join the Friends of Hellifield Team. This wonderful group of volunteers are currently small (even though their plans are big!). If you would like to help in the new year, please do get in touch. We do not want this much needed resource to disappear due to lack of support/volunteers and every pupil in our school has benefited in some way from their efforts this year!



Community Updates (Parking at School and Park Avenue)

We kindly ask that if you are able to walk your child/children to school, please do so. At present the main school car park is extremely busy from 8.30am to 9.00am, as we share this space with Chipmonks Day Nursery. Some members of our team have been unable to get a space when they arrive at school as parents are using these spaces, often with their engines running. On occasions some of our staffing team have to park elsewhere and move their cars later when parents have left. **Please do not** use the disabled space or the space next to this if you do NOT have a disabled badge. We do understand that parents may be travelling to other locations after the school drop off. This is a another **firm reminder** to please park at the end of Park Avenue and walk down to school if you are dropping off at the back gate. Please do not park near the school gates, as this space is needed for cars to turn around to avoid congestion. This also includes blocking residents' driveways or driving whilst children are not wearing a seat belt as this has been noted and residents are reporting concerns to the police. Please also be aware of your speed when driving to keep all children safe when entering and leaving school. We would like our neighbours to know that we care about our local community and that everyone's safety is a priority. Registration details of drivers who pose a risk to our children are currently being monitored.



A New Support Group

(Message from via Yvonne Crabtree & Sarah Horton for Hellifield Village Parents)



We are looking to set up a parent/carer Support Group in Hellifield, starting in the New Year and probably meeting on a monthly basis, depending upon what people feel they need and want.

We are hoping that we can help each other with some of the issues that crop up for those of us who are caring for our children at home. The group will cover all ages, from small children to adults; we may be at different stages, and have different challenges to face, but we are all on the same journey and will hopefully be able to learn from each other's experiences.

If you would like more information and/or are interested in joining us, please contact Yvonne Crabtree (01729 851806 yvonne.i.crabtree@btinternet.com) or Sarah Horton (07984 565058 sford982@gmail.com) Thank you

A Big Thank You!

A big thank you to a lovely family within our community who donated our amazing Christmas Tree this year, I am sure our pupils will agree that it looks beautiful!



To follow 'The Ribblesdale Federation of Schools' via Twitter - please go to '@FedRibblesdale'

This is a protected account and only confirmed followers will have access to the Tweets and our complete profile.

Please help our followers to grow!

Thank you for your continuing support from all the team at Hellifield C.P. School

(Part of The Ribblesdale Federation of Schools)

