

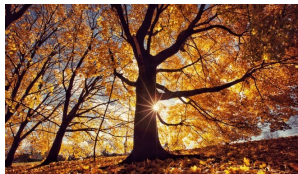


Hellifield Community Primary School Newsletter



A member of The Ribblesdale Federation of Schools – *Do everything in love (1 Corinthians 16:14)*

Welcome to our **October Newsletter**. It is lovely to see our new pupils settling in and making lots of new friends within their classes and across our lovely school. We have had such a busy start to this new academic year. As the Autumn season approaches, please make sure that pupils come to school wearing a warm waterproof coat. So far Oaks have impressed us with their enthusiasm for swimming and are making good progress on a Wednesday afternoon. Thank you to those who have returned individual Admin packs, if you haven't returned them, please do this as soon as you can. We would also like to say goodbye to Mrs Smith who will be leaving us this month as she starts her next big adventure in a new location with her lovely family. We will miss her and wish her all the best. Please keep in touch!



Dates for Diaries 2023/24 (Please note, diary dates may change and dates will also be added throughout the academic year) **HGPC: Year 5 & 6 Bike Ability to be rescheduled**

Monday 23rd October NHS Team in to deliver the Flu Nasal Vaccine with parental consent (11 to 12.30pm) letters to follow on for parents (R to Yr. 6)

Wednesday 25th October Halloween Disco (See text/flyer for details)

Friday 27th October School Photos / AM School closes at 3.30pm for half term

Tuesday 31st October Deadline to apply for a Year 7 place at a chosen secondary school <https://www.gov.uk/apply-for-secondary-school-place>

Monday 6th November Start of term for pupils

Saturday 25th November Settle Christmas Lights Switch on - See press for details

Friday 22nd December School closes at 3.30pm for half term

Monday 8th January Teacher INSET Day

Tuesday 9th January Start of term for pupils

Friday 9th February School closes at 3.30pm for half term

Monday 19th February Start of term for pupils

Thursday 7th March World Book Day

Friday 22nd March School closes at 3.30pm for half term for Easter

Monday 8th April Teacher INSET Day

Tuesday 9th April Start of term for pupils

Monday 6th May Bank holiday

Week Commencing from Monday 13th May Date from Gov.uk SATs Week

Friday 24th May School closes at 3.30pm for half term

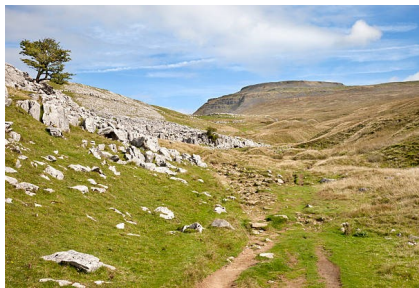
Monday 3rd June Start of term for pupils

Friday 19th July School closes at 3.30pm for Summer

Monday 22nd July Teacher INSET Day

A walk on the wild side!

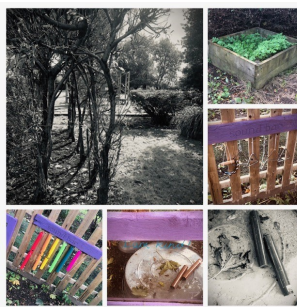
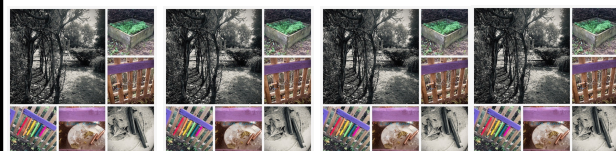
A big thank you to Mrs Jones and Mrs Mercer in collaboration with Wild Ingleborough for organising our recent Year 5 trip. It was nice to do something a little different to start the week off. The aim of this event was to promote healthy lifestyles and to learn more about our beautiful surroundings. We are so lucky to live in such a beautiful part of Yorkshire with access to The Yorkshire Dales National Park. Despite the weather - and a slight change of route, it was nice to blow away the cobwebs and take in the ever changing landscape of Ingleborough. It really did feel like we experienced nearly all of the seasons in one day. Oliver Roberts led this trip as mountain leader and he was accompanied by a member of the Wild Ingleborough team. Well done to all of our wonderful Year 5 pupils who showed such determination to keep going. Thanks to our wonderful support staff who encouraged us all to keep walking even against the wind!



Cross Country: Well done to all of the pupils across our Federation who took part in the Cross County event recently held at Giggleswick School. We are so proud of you all. Congratulations to those who made it to the finals, we are all rooting for you! A big thank you to those who helped with transportation so that everyone who wanted to go could attend.



Thank you from the bottom of our hearts! We would like to thank our amazing staffing team and our wonderful parents who took time out of their busy schedules to work on our outdoor space (you know who you are!). It looks amazing. This is still a work in progress but we are gradually getting there with our aim to enhance our amazing outdoor space!



Macmillan Coffee Morning: A big thank you to everyone who supported our Friends of Hellifield 'Macmillan Coffee Morning' on the 29th of September. It was such a lovely event and all the pupils enjoyed a yummy cake at playtime. More information will follow on from Friends to let us know how much was raised for such a worthy cause.

MACMILLAN CANCER SUPPORT



School Money (we are a cashless school): Please can School Money accounts be paid weekly to avoid a build up of arrears. If we address this with you directly, our intention is to help. Guidance on School Money is also available via our website; you can also contact school if you need any further assistance. For our new families, please follow the link which you will have been sent via a text/email already.



September 23

Whole School Attendance

Hellifield C.P. School 96.16%

Attendance Policy 2023

Key Points

Our attendance target is 97%

School opens at 8.45 and children in class by 9.

Morning register is completed by 9.05am – Teachers to mark pupils as absent if not in attendance. Late arrivals register via the office who mark the child as late.

The register will officially close at 9.30 am and pupils arriving between 9.05 and 9.30 will be marked as late by admin staff. Those pupils not in school will be marked as absent.

The afternoon register is completed by 1.05pm – Teachers to mark pupils as absent if not in attendance.

If children are not in class, staff will follow the missing children guidance within the full attendance policy.

Where a pupil is absent, and their parent has not contacted the school by the close of the morning register to report the absence, administrative staff will contact the parent by telephone call before 9.45 am on the first day that they do not attend school.

If contact cannot be made, the attendance officer is contacted and arrangements for a home visit will be made as soon after 9.45 am.

The school will always follow up any absences in order to:

Ascertain the reason for the absence.

Ensure the proper safeguarding action is being taken.

Identify whether the absence is authorised or not.

Identify the correct code to use to enter the data onto the school census system.

Cases of persistent absence, the attendance officer will contact parents to discuss. The attendance officer will inform the LA, on a termly basis, of the details of pupils who fail to attend regularly, or who have missed 10 school days or more without authorisation.

If attendance drops below 90% the attendance officer will arrange a meeting with the pupil's parents.

Where a pupil has not returned to school for 10 days after an authorised absence, or is absent from school without authorisation for 20 consecutive school days, the school will remove the pupil from the admissions register if the school and the LA have failed to establish the whereabouts of the pupil after making reasonable enquiries

The attendance officer will monitor and analyse attendance data regularly to ensure that intervention is delivered quickly to address habitual absence at the first signs.

Home Lunch Provision

Those children eligible for free school dinners and/or are in key stage one who may not be attending school, are entitled to packed lunches to be provided. Admin staff will arrange this with catering providers.

Home Lunches

With the Headteacher's approval for a child to have home dinners, parents will be required to meet their child at the school office when taking them off the premises – the pupil will be signed out and back in using the lunch time register at the school office. A member of staff will be available at the school office before the pupil leaves the premises and upon their return to sign them back in. No pupil will leave the premises before the member of staff at the school office has given their permission.

Truancy

Immediate action will be taken when there are any concerns that a pupil might be truanting. If truancy is suspected, the headteacher is notified, and they will contact the parent in order to assess the reasons behind the pupil not attending school. Procedures outlined in the attendance policy be taken in the event of a truancy.

Missing in school children

Pupils will not be permitted to leave the school premises during the school day unless they have permission from the school. The procedures within the full attendance policy will be taken in the event of a pupil going missing whilst at school.

Medical Appointments

Children will be collected from the office. Parents will sign the child out and give a reason for the appointment on the relevant document. On return, children will be signed back into school by their parents.

Attendance Monitoring Procedures

We have adopted the attendance monitoring procedures set out in the full policy, including; contact details and monitoring procedures. To ensure that pupils' attendance meets the expected standard, and effective intervention is provided where pupils' attendance falls below the standard.



The Ribblesdale Federation Governing Board

Chair of the Governing Board: Mr Andrew Bradley
Vice Chair: Rev Sue McWhinney
Mr Andrew Bradley: Co-opted Governor
Mr James Atkinson: Co-opted Governor
Rev James Rodley: Co-opted Governor
Mrs Emmy Hodgson: Co-opted Governor
Mr Carl Shuttleworth: Parent Governor
Ms Anna Lawrence: Parent Governor
Mrs Barbara Stirton: Staff Governor



Safeguarding and Attendance Link Governor: Rev Sue McWhinney
SEND/Mental Health Link Governor: Rev James Rodley
Health and Safety Link Governor: Andrew Bradley
EYFS Link Governor: Barbara Stirton

LA Governor: Vacant Post



To follow 'The Ribblesdale Federation of Schools' via Twitter - please go to '@FedRibblesdale' This is a protected account and only confirmed followers will have access to the Tweets and our complete profile. We also have our school Facebook page and lots of information available via our website: <https://ribblesdalefed.n-yorks.sch.uk/>

Please help our followers to grow! Thank you for your continuing support from all the team at Hellifield C.P. School Part of The Ribblesdale Federation of Schools)

Do everything in love (1 Corinthians 16:14)

Safeguarding Information: Hellifield C.P. School
Designated Safeguarding Lead: - Mrs Catherine Maddocks Executive Headteacher
Deputy DSL: Mrs Nicola Devereux & Mrs Claire Cawood



The Ribblesdale Federation is committed to safeguarding and promoting the welfare of all the children who attend our three schools.

Special Educational Needs Co-Ordinator: Mrs Nicola Devereux



If you have any worries or concerns regarding your child having SEN or mental health issues and well being problems, please do not hesitate to contact Mrs Devereux, via the school office. All correspondence will be treated in the strictest confidence.

Staffing 23/24 -The Ribblesdale Federation of Schools: Hellifield

SLT

Executive Headteacher: Mrs Maddocks

Assistant Head teachers: Miss Mounsey, Mr Wiseman and Miss Houghton (maternity leave)

School Business Manager: Mrs Middleton

Acorn Class - Teachers: Mrs Devereux & Mrs Shaw (Supported by Mrs Smith)

Sapling Class - Teacher: Mrs Cawood (Supported by Mrs Rawsthorne, Mrs Dugdale & Mrs Dawson)

Oak Class - Teacher: Miss Sargison (Supported by Miss McIntyre)

Wrap-Around-Care & Midday Supervisor & TA: Mrs Dugdale

School Cook: Mrs Eggleston

School Administrator: Mrs Dunkerley

School's I.C.T Technician: Mr Freytag - **School Caretaker & Cleaner:** Mrs Foxcroft



The following policies were adopted by the Full Governing Board on Monday 25th September 23, copies are available on the Federation website:

- ◆ **Child Protection and Safeguarding Policy**
- ◆ **Attendance Policy**
- ◆ **Induction of Early Career Teachers (ECTs) Policy**
- ◆ **Child on Child Abuse Policy**
- ◆ **Mental Health Policy**

