



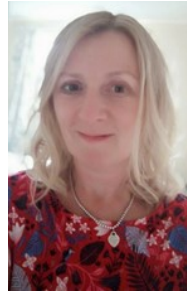
Hellifield Community Primary School Newsletter



January

A member of The Ribblesdale Federation of Schools – *Do everything in love (1 Corinthians 16:14)*

Welcome to our **January Newsletter** and a Happy New Year to you all. We hope that you have had a restful Christmas and that the children have had the opportunity to have recharged their batteries and are full of energy to start of a new term and a new year. In the blink of an eye, we have come to the end of the first few weeks of the new term. It only seems like five minutes ago when I wrote to you all on my first day. We have had a very positive start: the children and staff have been enthusiastic about so much already! It has been a privilege and pleasure to meet your amazing children in their classrooms, assemblies and around the school. Their attitude to learning and behaviour has been exemplary, so I hope that you will join me in praising them for their fantastic start to the new term. Well done everyone! I am fortunate to be working with such a talented and hardworking staff team, across the Federation and it has been wonderful meeting and greeting parents and families at the start and end of the school day. I will hopefully get the opportunity to catch up with more of you over the coming weeks. I am very keen to get to know the fabric of each of the three schools within the Federation quickly and to ensure the lines of communication are very much two way and supportive. I have been made to feel very welcome and I very much look forward to working with you all to ensure that all the children receive the very best education we can provide. Thank you for your support: it is greatly appreciated and valued.



Kind regards, Mrs Catherine Maddocks

Dates for Diaries 2023 *(Please note, diary dates may change and dates will also be added throughout the academic year)*

Tuesday 3rd January (2023)	Teacher INSET Day
Wednesday 4th January	Start of term for pupils
Monday 9th January	SDA Sports (After School Club)
Tuesday 10th January	Swimming Tuition starts at Settle Swimming Pool (AM) Years 4, 5 & 6 (Swimming kits needed)
Friday 10th February	School closes at 3.30pm for half term
Monday 20th February	Start of term for pupils
Monday 13th March	NHS Visit - 10.00am (Reception & Year 6 Pupils - Height and Measurements) (See email 18/10/22 for details)
Friday 31st March	School closes at 3.30pm for the Easter holidays
Monday 17th April	Teacher INSET Day
Tuesday 18th April	Start of term for pupils
Monday 1st May	Bank Holiday
Tuesday 2nd May	Pupils return to school
Monday 8th May	Bank Holiday (King's Coronation)
From Tuesday 9th of May	SATs Week (More information to follow)
Friday 26th May	School closes at 3.30pm for half term
Monday 5th June	Start of term for pupils
Friday 21st July	School closes at 3.30pm for the Summer holidays
Monday 24th July & Tuesday 25th July	Teacher INSET Days

Updates from 2022!

Thank you to everyone who took the time to make the Jingle Jars so fantastic for our Christmas Fundraiser Event! We received an excellent response to our request. Thank you to all the local businesses who supported us with lots of amazing donations for our lovely school, we are truly overwhelmed by your generosity!



If you are planning on recycling your empty Jingle Jars, please return them to school. Following the success of this event, we would like to do something similar again in the near future!

School Money

As we start the new year, please can we ask that you check your child's School Money account regularly. It was noted that at the end of last year there were a number of payments which were still outstanding on individual accounts. As you can appreciate, we aim to stay within our school budget and outstanding arrears can put a strain on our finances. **By checking you child's account regularly, you also avoid a large bill accumulating.**



Absences:

If your child is unable to attend school, please contact us by email or by telephoning school (you can also leave a message on our answer machine). We wish to remind our families that we do need to state why a child is absent on our daily electronic register system. **If no reason is given, the absence will be recorded as unauthorised.** This is why it is very important for you to let us know why your child can not attend school. We also wish to clarify that any holidays in term time will be recorded as an unauthorised holiday. If your child has a week off school for a holiday, this is classed as 10 sessions missed (which may trigger a fine). For a child to fall below the 96% target they would have missed 5 full days of lessons. We also encourage making medical appointments out of school time (wherever possible).

Thank you for your understanding and cooperation in working with us to keep our school's attendance rating as high as we possibly can. We always have your best interest at heart when monitoring individual attendance records within our Federation.

Attendance Ladder		
How close is your child to 100%?		
0 days off school	100%	Perfect!
Equates to 2 days off school each year	98%	Excellent
Equates to 13 days off school each year	93%	Good
Equates to 22 days off school each year	88%	Concerned
Equates to 32 days off school each year	83%	Very Concerned
Equates to 47+ days off school each year	75% or Below	Extremely Concerned

Please see Notice Board section for additional events for your diary!

 **December 22**
Whole School Attendance 96.72 %

To follow 'The Ribblesdale Federation of Schools' via Twitter - please go to '@FedRibblesdale'

This is a protected account and only confirmed followers will have access to the Tweets and our complete profile.

Please help our followers to grow! Thank you for your continuing support from all the team at Hellifield C.P. School (Part of The Ribblesdale Federation of Schools)



Notice Board (Other Events)

SDA Sports

Start Date for Spring 1 & 2

Monday 9th of January 2023

- PE kits needed if your child is attending - Last session TBC



SDA

SPORTS ACADEMY

Swimming (2023)

Start Date for Spring 1 & 2

Tuesday 10th of January 2023

Swimming kits needed if your child is attending

Last session TBC



Hellifield Community Pantry

Please spread the word, if you know of anyone who may be interested, please let them know!

Location - Wesley Centre (Haw Grove, Hellifield)

When - Every Friday: 2 to 3pm

Donations are greatly received and our school is a collection point.

Everyone welcome, bring what you can and take what you need

