



Hellifield Community Primary School Newsletter



A member of The Ribblesdale Federation of Schools – *Do everything in love (1 Corinthians 16:14)*

Welcome to our **September Newsletter**, especially to those who are new members of our school family (and our Federation). We hope you had a lovely summer break and that everyone has had time to relax and recharge their batteries. We are very much looking forward to another super academic year and have lots planned across our Federation, which is going from strength to strength. We would like to say a big warm welcome to our new starters in Acorn Class and across the school, who are all looking very smart in their school uniform and bursting with enthusiasm! Miss Binns has also joined our team and I am sure you will join us in giving her a very warm welcome when you see her on the school playground at the end of the day. Miss Binns will be with us on Mondays, Tuesdays and Wednesday mornings working in partnership with Mrs Devereux in Sapling Class. As some of you will already know, Mrs Jones will continue to teach PE across our school as well as working in Sapling Class with Mrs Cawood. We will all very much cherish the moments we have with our current Year 6 pupils and prepare them as much as we can for their transition to Year 7 in 2023!



September

*Indian summer breezes blow
the geese are taking flight
A softly glowing harvest moon
lights up the starry night.
The special warmth and happiness
we feel throughout September
Will fill our hearts all winter long
with beauty to remember.*

Dates for Diaries 2022/23

(Please note diary dates may change and dates will also be added throughout the academic year)

Monday 5th September	Teacher INSET Day
Tuesday 6th September	Start of term for pupils
Friday 21st October	School closes at 3.30pm for half term
Monday 31st October	Start of term for pupils
Tuesday 8th November	Hellifield C.P. School only Childhood NHS Team in to deliver the Flu Nasal Spray Vaccine - via Parental consent on line 1.00pm (More information to follow)
Friday 16th December	School closes at 3.30pm for the Christmas holidays
Tuesday 3rd January (2023)	Teacher INSET Day
Wednesday 4th January	Start of term for pupils
Friday 10th February	School closes at 3.30pm for half term
Monday 20th February	Start of term for pupils
Friday 31st March	School closes at 3.30pm for the Easter holidays
Monday 17th April	Teacher INSET Day
Tuesday 18th April	Start of term for pupils
Monday 1st May	Bank Holiday
Tuesday 2nd May	Pupils return to school
Friday 26th May	School closes at 3.30pm for half term
Monday 5th June	Start of term for pupils
Friday 21st July	School closes at 3.30pm for the Summer holidays
Monday 24th July & Tuesday 25th July	Teacher INSET Days

Staffing 22/23 - The Ribblesdale Federation of Schools

(Team Hellifield)

Executive Headteacher/Designated Safeguarding Lead: Miss Ward

SENDCo: Mrs Devereux

Deputy Safeguarding Leads: Mrs Cawood & Miss Sargison

Acorn Class - Teachers: Mrs Devereux & Miss Binns (Supported by Mrs Smith)

Sapling Class - Teachers: Mrs Cawood & Mrs Jones (Support by Mrs Dugdale & Mrs Dawson as supply GTA)

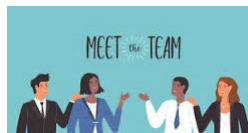
Oak Class - Teacher: Miss Sargison (Supported by Miss Rawsthorne)

Wrap-Around-Care: Mrs Dugdale

Midday Supervisors (MSA): Mrs Dawson & Mrs Dugdale

School Cook: Mrs Eggleston School Administrator: Mrs Dunkerley

School ICT Technician: Mr Freytag School Caretaker & Cleaner: Mrs Foxcroft



July 22 - Whole School Attendance: 94.66%



Please see Notice Board section for additional events for your diary!

House Keeping:

Day to day:

Breakfast Club: 8am - 8.45am (Monday to Friday), Start of day: 8.45am, Lunch - 12pm to 1.00pm (Including Playtime), Home-time: 3.30pm, After School Club: Runs from the end of the school day to 5.30pm (Monday to Thursday). For booking, please contact school via our admin account or via the telephone. If parents are running late and we haven't heard from you, your child/children will automatically be booked in with our After School Club provision until you can get here. Charges - Please see our website for additional information regarding cost per session <https://ribblesdalefed.n-yorks.sch.uk/parents/clubs/>

Admin packs:

Please be aware an admin pack will be coming to each family. This will include: Personal detail updates/Home School Agreements/Consents for local trips/visits, photos, social media etc. We appreciate it is a lot of paperwork and some documents are double sided. If you need help completing forms, please just ask. It is important information that we need as a school to operate and keep your child safe - so please complete each document and return as soon as you can.

Parking, book bags and staying safe:

We do have parking at the front of school with limited spaces available, as this is also used for staff and Chipmonks Day Nursery. Please continue to be considerate to our neighbours at the back of school during drop off and pick up times. If you are driving could you please park at the end of the road and try to avoid turning round by the gate to avoid congestion. Please do not let your child/children bring toys or objects into school in or on their book bags, especially in Acorn Class (as they need to fit in a slim tray). The only things children need on a daily basis are: **coat, water bottle with WATER in (no juice please) and any extra clothing kits (e.g. swimming)**. This also includes a packed lunch if they do not wish to have a lunch provided by school. Our school dinners are very popular, ingredients are locally sourced and everything is cooked freshly on site each day. Please do not let your child or children scoot or cycle on the car park at the front of school, as cars are coming in and out throughout the day constantly. Our aim is to keep everyone as safe as possible.

Celebration Assemblies:

Celebration Assemblies will now be held in schools, face-to-face.

Hellifield's whole school assembly is every Friday starting at 3.10pm. Please access the school building via the main entrance if you are attending. All welcome!

School Money:

Due to the success of using School Money for a number of years now, we will continue to be a cashless school. We hope that any outstanding payments due were cleared during the summer holiday period. If you have anything still outstanding, we kindly ask if this can be paid in full as soon as possible (as a matter of urgency as all pupils should now have a £0 balance on their individual account - thank you). Guidance on School Money is available via our website; you can also contact school if you need any further assistance. For our new families, you will be sent a link via a text/email during the Autumn term (1) to access School Money.

Milk:

All under fives are entitled to free milk, however we offer milk to all pupils throughout the school at a cost of 20p a day to be paid half termly through School Money. Please email Admin to let us know if you want your child to have milk at playtime. If your child is funded for Free School Meals (NOT Universal Free School Meals), we can provide this, but please still contact us to let us know (hadmin@ribblesdalefed.n-yorks.sch.uk - Thank you).

Free School Meal Funding:

If your financial circumstances have recently changed, it is always worth considering applying for Free School Meal assistance via NYCC. Application forms are available via school website (<https://www.hellifield.n-yorks.sch.uk/free-school-meals-guidance-application-forms-1/>). If you would like us to assist with this, please ask. We can also email your application to the welfare team at NYCC. Each case will be treated as confidential. Paper copies of the application form can be printed for you. Every family had a copy of this sent home in their admin pack during the Autumn term.

This funding can also trigger financial support with: **School Trips & Residentials, Wrap-Around-Care provision, After School Activity Clubs, and School Uniform**. If you would like to speak to NYCC School Welfare Team details are: Tel - 01609 533405 Email: welfare@northyorks.gov.uk

Safeguarding:

If a different adult will be collecting your child from school, please let the school office know by telephone or email rather than your child passing a message on to staff. If your child is poorly, please also let us know as soon as possible. Thank you.

PE Kits:

Please bring in PE kits on a Monday and leave them in school to be taken home as the end of the week (or half term) to be washed.

School Uniform:

Please can school uniform be labelled and if your child can not tie their own laces, we recommend Velcro shoes and trainers.

Outdoor Learning:

All pupils need a pair of wellies to be left in school to access Forest Schools and Outdoor Learning.

Swimming:

Provisional dates to follow as soon as we are updated by Settle Swimming Pool.



To follow 'The Ribblesdale Federation of Schools' via Twitter - please go to '@FedRibblesdale'

This is a protected account and only confirmed followers will have access to the Tweets and our complete profile.

Please help our followers to grow!

Thank you for your continuing support from all the team at Hellifield C..P. School

(Part of The Ribblesdale Federation of Schools)



Notice Board (Other Events)

Church Services (Within our local community)

Hellifield C.P. School

Harvest Service

Thursday 29th September

St Aiden's Church (Hellifield)

10.30am - All welcome

*Tinned and dried food donations welcome
(donations to be dropped off at school
please - W/C 26th - Thank you)*



October - Black History Month



Themed Lunch Days

(Hellifield C.P. School)

Friday 21st October (Diwali)

*Monday 31st October 22
(Halloween)*

*Friday 4th November 22
(Bonfire Night)*



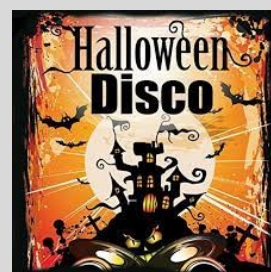
Friends of Hellifield (PTA)

Autumn Term

Halloween Disco

Hellifield C.P. School

*(TBC / More information
to follow)*



Children in Need

Friday 18th November

*(Wear Spots - More information to
follow)*



Hellifield Community Pantry

Please spread the word, if you know of anyone who may be interested, please let them know!

Location - Wesley Centre (Haw Grove, Hellifield)

When - Every Friday: 2 to 3pm

Donations are greatly received!

Everyone welcome, bring what you can and take what you need

(We will also be a collection point for donations to support the Wesley Centre)

