



Hellifield Community Primary School

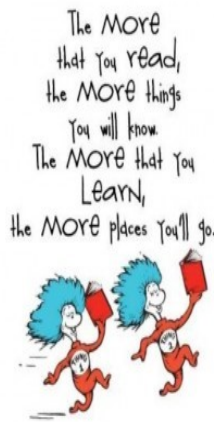


A member of The Ribblesdale Federation of Schools – *fostering a love of learning through collaboration and fun*

Welcome to our **May Newsletter**. There has been lots happening since our last Newsletter across The Ribblesdale Federation. Thank you for your co-operation in supporting the smooth transition when entering the school grounds and leaving each day, please remember to continue to socially distance during this time, in order to keep everyone as safe as we possibly can during this period of easing out of the national lockdown.

Due to the national lockdowns, statistics show that children are at a higher risk of being manipulated on line and via social media. Please read the information attached to this link (Below) and have regular conversations with the children regarding keeping safe online (Thank you).

Keeping safe: <https://www.stopitnow.org.uk/wp-content/uploads/2020/10/>



Dates for Diaries 2021

(Please note diary dates may change due to Covid-19)

Monday 3rd May	Bank holiday
Friday 28th May	School finishes for half term at 3.30pm
	Half term Holiday
Monday 7th June	Start of term
Friday 23rd July	School finishes for the Summer holiday at 3.30pm

Packed Lunches

We would also like to remind our families that we expect our pupils to bring in a healthy and nut free packed lunch please. If you would like to try a school dinner, we are extremely flexible, produce is sourced locally and everything is made from scratch on site. Mrs Eggleston's home made sausage rolls have especially been a favourite this term (We do have vegetarian options available daily). We kindly ask for two weeks notice if you would like to switch, as food orders are processed two weeks in advance.

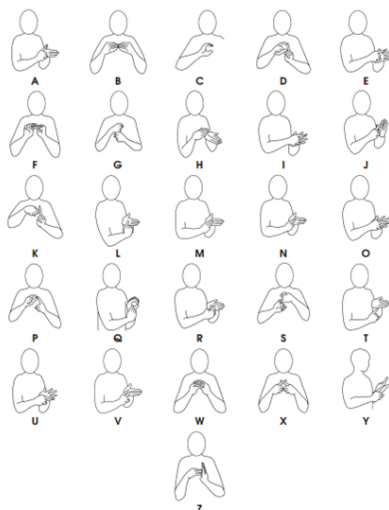
Packed lunches should not include: salty snacks such as crisps - instead seeds, vegetables and fruit with no added salt, sugar or fat. Confectionery such as chocolate bars, chocolate-coated biscuits, cereal bars, processed fruit bars and sweets. Sugary soft drinks, such as squash and fizzy drinks (even if labelled as 'sugar-free', 'no-added sugar' or 'reduced sugar' as these drinks can contribute to tooth decay and provide little nutritional value).

Please refer to the RFS Packed lunch Policy, which is on our school website, if you need further advice (Thank you).



Makaton

You will be aware that staff attended Makaton training during our last inset day. Makaton is a language programme that uses signs together with speech and symbols, to enable people to communicate. It supports the development of essential communication skills such as attention,



listening, comprehension, memory and expressive speech and language. You may be familiar with the CBeebies TV programme 'Something Special' which Makaton is demonstrated by Justin Fletcher. If you are interested, there are lots of resources on line. If you would like us to send you the Makaton sign sheet, so that you can practice at home - please get in touch.

Our friendly Worry Monster are here to help!

We have a three new members who have joined The Ribblesdale Federation of Schools. We would like to introduce our family of Worry Monsters. They will help our pupils to acknowledge, express and let go of any anxieties they may have. If our pupils have any worries, they can simply write them down on a piece of paper and our Worry Monsters will eat their messages and help their worries disappear!



Friends of Hellifield

A big thank you to Friends of Hellifield, who recently raised nearly £200.00 via the Easter Board. Thank you so much to those within our community who supported this fantastic event and bought tickets! We are very grateful to be at the centre of a wonderful little community!





Our Hellifield Stone Owl Family

Thank you to those who have kept us updated with how the Hellifield School Stone Owl Family are getting on travelling around our village, they have definitely been busy! A big thank you to Mrs Smith and Miss Sargison, who helped them on their journey!

Accordion Tuition

Due to us transitioning out of lockdown, we are now extremely happy to announce that Mr Hinchcliffe is available for Music Tuition across The Ribblesdale Federation of Schools. If you would like to take up this opportunity to learn music, please let us know or contact Craven School of Music via: cravenschoolofmusic@hotmail.co.uk

It is recommended that accordion can be started from age 5 years and upwards. Previously Mr Hinchcliffe has also offered keyboard and guitar tuition at Hellifield C. P School. Everyone is welcome! *(Photo of Mr Hinchcliffe - from Keighley News)*



Cricket Tuition

We are now offering Cricket on a Thursday afternoon, in partnership with Settle Cricket Club. This has been very exciting for our children so far!



General safeguarding updates

Scooter and bike safety

Please ensure your child wears a correctly fitted helmet when cycling or scooting to school. Children should not scoot or cycle without a helmet and must walk with their wheels when on the school premises. This is to keep themselves and others safe. Thank you for your cooperation with this.

Home time arrangements

We would like to ask all parents to inform the school office or class teacher if their child will be going home with another child's parents or with any other adult. If we do not hear from parents directly about changes to the home time routine, we cannot let children leave school with adults other than their usual carers. Please let us know in advance in writing or by calling school and leaving a message.

Sun protection

Now the weather is becoming warmer, please ensure children have a sun hat and a named bottle of water in school each day. On days where sun screen is needed, please use an all day cream before school or send your child with a named roll on or spray cream that they can manage independently. Our staff cannot put sun cream on children.

The Ribblesdale Federation of Schools now has a Twitter account '@FedRibblesdale' This is a protected account and only confirmed followers will have access to the Tweets and our complete profile. **Please follow us on Twitter as our numbers continue to grow!**

Thank you for your continuing support from all the team at Hellifield C.P. School

(Part of The Ribblesdale Federation of schools)

