



Giggleswick Primary School Newsletter



December

A member of The Ribblesdale Federation of Schools – *fostering a love of learning through collaboration and fun*

Welcome to our **December Newsletter**. As another year comes to a close, we have lots of things to be thankful for, especially our health as we continue this journey together through a global pandemic. Our wonderful reception pupils have almost made it through their first term and all the pupils across the Federation continue to make us smile every day, always full of enthusiasm and curiosity - with a positive attitude towards their own learning. Thank you to The Federation Team and to our Governors for everything that they have done for us throughout 2021. We still have lots to look forward to leading up to Christmas, including our Nativity. We are very much looking forward to Christmas Dinner this year which every pupil will be having. A big thank you to Mrs Richardson who always does a wonderful job. Our Christmas Tree is looking beautiful, thank you to those who have brought beautiful baubles for our theme **Narnia**; the spirit of Christmas is now all around us! We finish on Friday the 17th of December and look forward to the new year with our pupils starting on Wednesday 5th of January 2021. Thank you for your continued support throughout 2021, we wish you all a very happy and healthy 2022 from all of us at The Ribblesdale Federation of Schools!



Dates for Diaries 2021/221	
Friday 10th December	Nativity in church 2pm
Wednesday 15th December	Christmas Lunch
Friday 17th December	Christmas party and a visit from Santa. School closes at (3.30pm) for Christmas holidays
Tuesday 4th January 2022	Teacher INSET Day
Wednesday 5th January 2022	Children return to school (Start of term for pupils)

Sponsored Walk



Thank you to all the pupils who took part in the Sponsored Walk last month, this was a fantastic day and everyone enjoyed this experience; wow, you are superstars! Our pupils enjoyed their hot chocolate treat which warmed everyone up upon their return. So far we have raised over £600. Please can sponsor money donations be sent in as soon as possible, as we would like to update you on our grand total.



...On the 11th hour, of the 11th day, of the 11 month, we remembered...



It was lovely to see our pupils attending our special Remembrance Assembly last month in their Rainbow, Cubs, Brownie and Scout uniforms. On the 11th hour we paid our respects and remembered those who have served our Queen and country and to those whose lives have been lost through War. Thank you to all who contributed so generously to our Poppy Appeal this year.

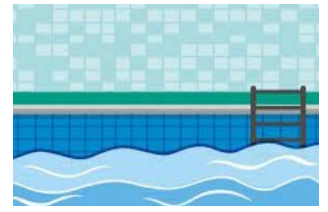


November Whole School Attendance: 95.32%



Swimming

Swimming next term is for Alkelda Class. Please note pupils will get changed at the swimming pool. Please collect siblings from school first before collecting at the pool.



Open Day

A big thank you to those who attended our Federation Open Day for families of pupils who are starting in September 2022. It was lovely to meet you all and celebrate our wonderful school with those who attended.



Absences & Safeguarding (Illness)

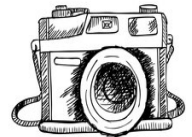
If your child is absent from school, please contact us as soon as possible giving a reason why. If your child is showing symptoms connected to Covid-19, please do a Covid-19 L F test as a precaution to keep everyone as safe as possible as there are still a high number of Covid-19 cases within our local community. Please also refer to our October Newsletter with reference to attendance guidance. If your child has sickness or a poorly tummy, they need to stay at home and be clear from the last tummy upset for 48 hours. Please note we are monitoring individual attendance. We ask that all family holidays are planned during the scheduled holiday period, as other absences have to be recorded as unauthorised (following the DFE code of conduct). Ten unauthorised absences can trigger a fine of £60 (per child). Please note that absences are recorded as AM and PM sessions (two sessions per day); a full week away from school is ten valuable educational sessions missed. We have a legal obligation to report a high number of unauthorised absences to the LEA.

ATTENDANCE



School Photographs

Thank you to those who supported our School Photo venture this year. Julia thoroughly enjoyed spending time with our team and pupils. We hope you like the photos! <https://www.juliakennedy.com>



Children in Need & Odd Socks Day



Thank you to all the pupils who supported Children in Need this year! Our theme was: Come As Yourself! Our pupils had a fun-filled day. We raised £172.60. So thank you everyone. It was lovely to see staff and pupils supporting our Odd Socks Day to start our anti-bullying week across our Federation. This showed how we are all different and unique!

Weather

Due to the cold weather approaching, please make sure that pupils come to school with a waterproof coat and warm accessories. It is extremely rare for us to close because of the weather and this will be only be in the interests of health and safety for staff and pupils. If we need to do so, you will be informed via a text message and if possible, this will be announced on our school website. We aim to let parents and carers know as early as we can. If weather conditions deteriorate during the school day and there is a need for early closure, we will again send parents a text message and notification will be on the website if possible. Please can you ensure that we have up to date contact numbers for you - Thank you.



Settle Switch ON

Many of our pupils got together to sing at the Settle Switch On..
It was so cold but they were brilliant. Well done everyone.



All Aboard the Bentham Line!

A big thank you to the team of the Bentham line who organised a wonderful day for Alkelda Class. We departed from Giggleswick Station and headed to Carnforth, spending a wonderful day at The Heritage Centre. We took part in a special Art Project as well as gaining lots of knowledge about trains from this exciting experience.



To follow 'The Ribblesdale Federation of Schools' via Twitter - please go to '@FedRibblesdale'

This is a protected account and only confirmed followers will have access to the Tweets and our complete profile.

Please help our followers to grow!

Thank you for your continuing support from all the team at Giggleswick P. School

(Part of The Ribblesdale Federation of Schools)

