

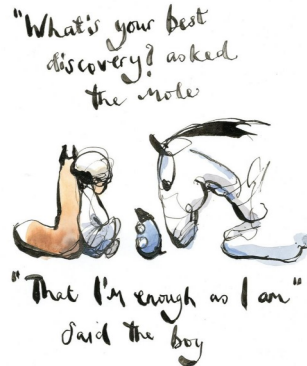


Hellifield Community Primary School



A member of The Ribblesdale Federation of Schools – fostering a love of learning through collaboration and fun

Welcome to our **April Newsletter**. It is lovely to see the warmer weather gradually filtering through as the seasons change. With reflection upon our wider opening from the 8th of March, the pupils have taken this transition in their stride. There has been much enthusiasm shown towards their learning and they have enjoyed catching up with their friends, as this social interaction has been missed. They have adjusted brilliantly in getting back into daily routines of school, which is wonderful and we are very proud of all of our pupils across The Ribblesdale Federation. Our staff have also been fantastic and there is a lovely atmosphere in all of our three schools! As this will be our last Newsletter before we finish for the Easter Holiday, we would like to wish you a happy and safe break and we look forward to seeing everyone on Tuesday 13th April (Following on from our Staff Inset Day on the 12th).



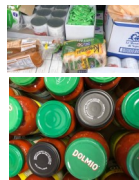
Dates for Diaries 2021

(Please note diary dates may change due to Covid-19)

| | |
|---------------------------|--|
| | Easter Holiday |
| Monday 12th April | Staff Inset (School closed for pupils) |
| Tuesday 13th April | Start of term |
| Monday 3rd May | Bank holiday |
| Friday 28th May | School finishes for half term at 3.30pm |
| | Half term Holiday |
| Monday 7th June | Start of term |
| Friday 23rd July | School finishes for the Summer holiday at 3.30pm |

Hellifield Community Pantry

We would like to say a huge thank you to the Hellifield Community Pantry, who have recently provided our school kitchen with a bundle of wonderful dry food resources, which was absolutely brilliant! The Hellifield Community Pantry is open every Friday at the Wesley Centre on Haw Grove, from 2 - 3 pm. There's lots of surplus supermarket food available. All free of charge and it's for everyone. Young families included. It's in conjunction with Age UK and it makes sense to come along and save money whilst reusing surplus stock. **Please use this wonderful resource - Everyone is welcome!**



World Book Day

A big thank you to all those who took part in our World Book Day Event this year. It was wonderful to see the pupils in their costumes, based on their chosen character from their favourite book! Well done to everyone! Choosing our winners was such a hard decision and it was extremely close!



Congratulations to Dylan, Rupert, Joe, and Lola!

HAAGA Needs You!

You may be aware that the Hellifield Area Allotment and Garden Association (HAAGA), are looking to recruit committee members and a Chairperson. Sadly if these positions are not filled, this wonderful local resource may be lost. If you are interested - or know of anyone who may be interested, please let us know and we will pass on your details to HAAGA.



Thank you

Red Nose Day

A big thank you to those who supported Red Nose Day this year, it was lovely to see the colour red flooding our Federation Schools in support of this event, with your help we raised whopping **£70.00!**



Thank you to all of the pupils who voluntarily told their funny jokes during our Federation assemblies, you definitely made us laugh!

Also a big thank you to our School Cook (Mrs Eggleston), who baked special buns for our pupils, who enjoyed eating them at break time. Everyone had a fantastic day!



Friends of Hellifield

A big thank to Friends of Hellified, who have recently set up an Easter Board to raise money for our wonderful school. Thank you so much to those within our community who have supported this event and bought tickets! We would also like to thank **H's Fish & Chip Shop** in Hellified, for kindly donating Fish and Chips for a family of 4. We are very grateful to be at the centre of a wonderful little community!



We need your help!

Please can we kindly ask that if you are dropping off/collecting your child/children in a vehicle via Park Avenue that you park at the end of the road and walk to school. As you will be aware from previous correspondence this area is extremely tight and is needed for parents and children to walk in safety to access school.

As well as keeping everyone safe, please also show consideration to our neighbours on Park Avenue. We will be noting the number plates of vehicles that disregard this request.

We would also like to thank our families for driving with extreme care when entering the front car park, as much younger children use this space to access the nursery. Thank you for your continued support regarding this matter.



School Absences

May we remind you that if your child is absent, please can you contact school as early as possible giving a reason why so that we can complete our daily attendance register. If an absence is linked to a suspected Covid case, please follow the government's guidelines if you need to book a test or isolate and keep us updated. Thank you.

Wrap Around Care

Please read and return the recent wrap around care survey to help us to provide a continued good service. Thank you to all parents who currently support this facility.



Breakfast Club: (Monday to Friday Morning)

8.00am to 9.00 am (£3.00), 8.30am to 9.00am (£1.50)

After School Club (Monday to Thursday Evening) A light meal is included for those who stay for the full ASC session.

3.30pm to 4.30pm (£3.00), Second sibling £2.50

3.30pm to 5.30pm (£6.00), Second sibling £5.00

(3.30pm to 4.00pm £1.50),



Easter Holiday Club with Kanga Sports

Kanga Sports have now confirmed that they will be running an Easter club within the government guidelines.

- The club will be available for children who require childcare; this is if it supports a parent with being able to work or complete training.
(They will be operating set days for bookings to ensure that we have **NO** crossing over of bubbles, these will be 2 consecutive days or a full week booking)
 - Group sizes will be a maximum of 15 children
 - The day will be staggered start and end times with a single drop off
 - Children will be allocated an indoor space that is used by those children only for the time they are in and cleaned thoroughly throughout the day and the end of the day
 - Each bubble will be allocated a space for using the toilet and handwashing that is only accessed by them
 - All bookings must be made through the booking site so we can accept payments and collect contact information, so any contact can be made through e-mail/phone to avoid face to face communication between parents and coaches

They have confirmed clubs and dates at Skipton Academy and Austwick, and they have an other potential venue in Bingley (which is TBC) For more information go to: www.kangasports.co.uk



The Ribblesdale Federation of Schools now has a Twitter account '@FedRibblesdale' This is a protected account and only confirmed followers will have access to the Tweets and our complete profile. **Please follow us on Twitter as our numbers continue to grow!**

Thank you for your continuing support from all the team at Helli-field C.P. School

(Part of The Ribblesdale Federation of schools)

